

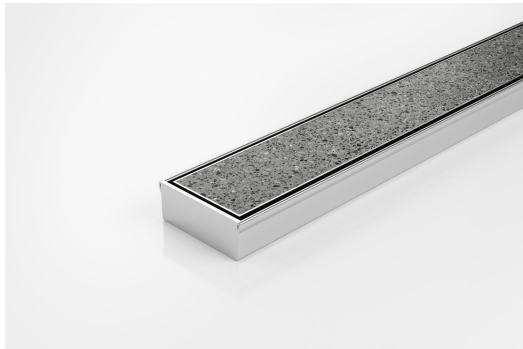


ARCHITECTURAL  
GRATES + DRAINS



# 65Tii25MTL

## Tile Insert Drain



All stainless steel drainage unit made to specified length with specified outlet position.

The 65Tii25 is a Tile Insert Drain manufactured from 1.5mm thick 316 marine grade stainless steel.

Suitable for tiles up to 10mm thick.

The maximum length of the tile insert will be 1200mm in one piece, channels longer than 1200mm will have inserts in multiple equal sections

**Code** 65Tii25MTL

**Range** 65

**Grate Style** Ti

**Category** Made-to-Length

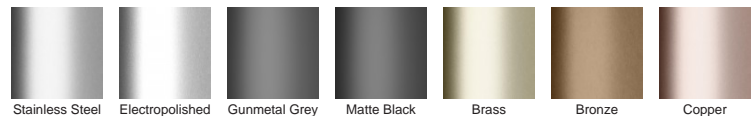
**Channel Material** Stainless Steel

**Steel Grade** 316

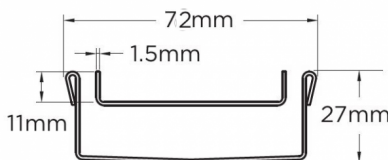
### SPECIFICATIONS + DIMENSIONS

<b>Channel Width</b>	72mm
<b>Channel Depth</b>	27mm
<b>Length(s)</b>	As Required
<b>Outlet Size</b>	DN40, DN50, DN65

### STORMTECH COLOUR FINISHES



Electroplate finishes subject to natural variation with time and local environment. Factors such as pools/surf beaches may require electropolishing. Contact us for suitability.



Grates longer than 1500mm supplied in sections. Tile Inserts longer than 1200mm supplied in sections. Channels over 3000mm supplied in sections with joiner. +/-2mm tolerance on dimensions.

### PRODUCT APPLICATIONS

- |                             |                            |
|-----------------------------|----------------------------|
| Bathroom Drainage           | Shower Drainage            |
| Aged / Health Care Drainage | Multi-Residential Drainage |
| Balcony Drainage            | Special Needs Drainage     |
| Commercial Drainage         | Threshold Drainage         |
| Courtyard / Patio Drainage  | Suspended Slab Drainage    |
| Hospitality Drainage        | Wet Area Drainage          |

Copyright © Stormtech Pty Ltd. Patent 733361. Drawings not to scale, please use dimensions shown. Downloaded 22/04/2026 (please check for updates)



Visit [stormtech.com.au](http://stormtech.com.au)  
for tools + inspiration.

Phone **1300 653 403**

Email [info@stormtech.com.au](mailto:info@stormtech.com.au)