

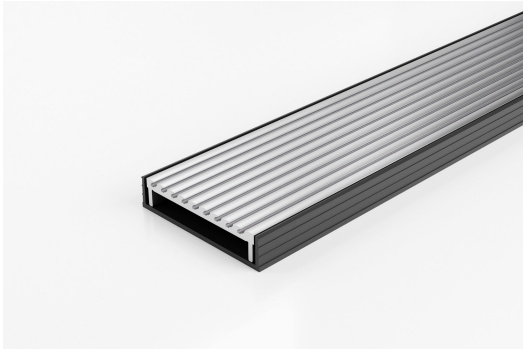


ARCHITECTURAL
GRATES + DRAINS



100AAGBL20

Linear Drain



The 100AAG20 features a unique, all Aluminium Wave grate design paired with a black uPVC channel.

Made in Australia from high grade, locally sourced and anodised Aluminium.

Modular site finished linear drainage system features all Aluminium Wave grate combined with a uPVC channel.

Code 100AAGBL20

Range 100

Grate Style AA

Category Modular Kits

Channel Material uPVC



Grates longer than 1500mm supplied in sections. Tile Inserts longer than 1200mm supplied in sections. Channels over 3000mm supplied in sections with joiner. +/-2mm tolerance on dimensions.

SPECIFICATIONS + DIMENSIONS

Channel Width	106mm
Channel Depth	23mm
Length(s)	900mm 1000mm 1200mm 1500mm 1800mm 2000mm 2200mm 2400mm 2700mm 3000mm
Outlet Size	DN40, DN50, DN80, DN100

STORMTECH COLOUR FINISHES



Electroplate finishes subject to natural variation with time and local environment. Factors such as pools/surf beaches may require electropolishing. Contact us for suitability.

PRODUCT APPLICATIONS

- | | |
|-----------------------------|-------------------------|
| Bathroom Drainage | Special Needs Drainage |
| Aged / Health Care Drainage | Threshold Drainage |
| Balcony Drainage | Suspended Slab Drainage |
| Hospitality Drainage | Wet Area Drainage |
| Shower Drainage | |
| Multi-Residential Drainage | |

Copyright © Stormtech Pty Ltd. Patent 733361. Drawings not to scale, please use dimensions shown. Downloaded 22/04/2026 (please check for updates)



Visit stormtech.com.au
for tools + inspiration.

Phone **1300 653 403**

Email info@stormtech.com.au