

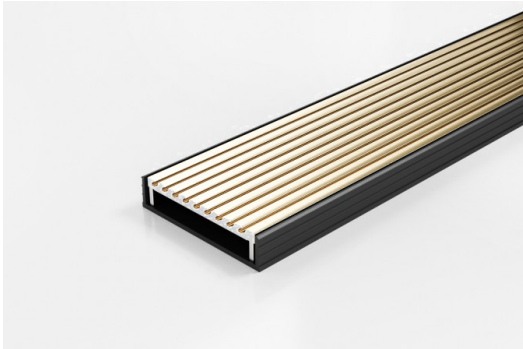


ARCHITECTURAL  
GRATES + DRAINS



# 100AAGBL20-BG

## Linear Drain



The 100AAGBL20-BG features a unique, all Aluminium Wave design grate finished in Beach Gold anodized aluminium finish and paired with a black uPVC channel.

Made in Australia from high grade, locally sourced and anodised Aluminium.

Modular site finished linear drainage system features all Aluminium Wave grate combined with a uPVC channel.

**Code** 100AAGBL20-BG

**Range** 100

**Grate Style** AA

**Category** Modular Kits

**Channel Material** uPVC

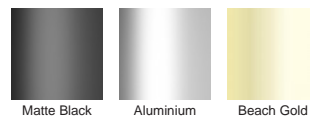


Grates longer than 1500mm supplied in sections. Tile Inserts longer than 1200mm supplied in sections. Channels over 3000mm supplied in sections with joiner. +/-2mm tolerance on dimensions.

### SPECIFICATIONS + DIMENSIONS

<b>Channel Width</b>	106mm
<b>Channel Depth</b>	23mm
<b>Length(s)</b>	900mm 1000mm 1200mm 1500mm 1800mm 2000mm 2200mm 2400mm 2700mm 3000mm
<b>Outlet Size</b>	DN40, DN50, DN80, DN100

### STORMTECH COLOUR FINISHES



Electroplate finishes subject to natural variation with time and local environment. Factors such as pools/surf beaches may require electropolishing. Contact us for suitability.

### PRODUCT APPLICATIONS

- |                             |                         |
|-----------------------------|-------------------------|
| Bathroom Drainage           | Special Needs Drainage  |
| Aged / Health Care Drainage | Threshold Drainage      |
| Balcony Drainage            | Suspended Slab Drainage |
| Hospitality Drainage        | Wet Area Drainage       |
| Shower Drainage             |                         |
| Multi-Residential Drainage  |                         |

Copyright © Stormtech Pty Ltd. Patent 733361. Drawings not to scale, please use dimensions shown. Downloaded 18/04/2026 (please check for updates)



Visit [stormtech.com.au](http://stormtech.com.au)  
for tools + inspiration.

Phone **1300 653 403**

Email [info@stormtech.com.au](mailto:info@stormtech.com.au)